

Translucent Red



Orange Clear Green Blue Purple
Translucent

1256-M  **Best Seller**

Translucent House-shape Letter Opener with Magnet

FEATURES: Features stainless steel blade with high capacity MicroMagnet. Holds up to 6 sheets of paper. Available in translucent red, orange, clear, green, blue and purple. Embedded metal blade.

DIMENSIONS: 3.25" x 2"

IMPRINT AREA: 1.75" x 1.25"

PACKAGING: Individual polybag

IMPRINTING: Prices include 1-color 1-location imprint



Please visit pacificline.com or scan this code for current pricing and product info

1262-M  **Best Seller**

Translucent Phone Shape Letter Opener with Magnet

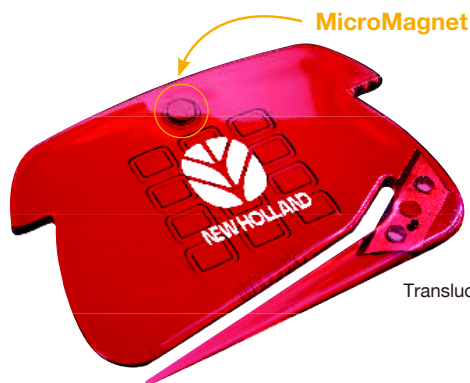
FEATURES: Back-cut design does not affect imprint area. Features stainless steel blade with high capacity MicroMagnet. Holds up to 6 sheets of paper. Available in translucent red, orange, blue, green, pink, clear and purple. Embedded metal blade.

DIMENSIONS: 3.1" x 2.2"

IMPRINT AREA: 1.8" x 1"

PACKAGING: Individual polybag

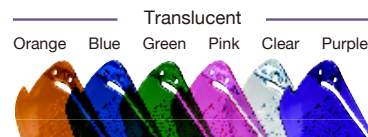
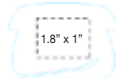
IMPRINTING: Prices include 1-color 1-location imprint



Translucent Red



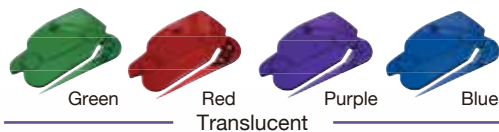
• Translucent Letter Openers



Please visit pacificline.com or scan this code for current pricing and product info



Translucent Clear



1266-M  **Best Seller**

Translucent Van Shape Letter Opener with Magnet

FEATURES: Back-cut design does not affect imprint area. Features stainless steel blade with high capacity MicroMagnet. Holds up to 6 sheets of paper. Available in translucent clear, green, red, purple and blue.

DIMENSIONS: 3.1" x 2.2"

IMPRINT AREA: 1.5" x 1.25"

PACKAGING: Individual polybag

IMPRINTING: Prices include 1-color 1-location imprint



Please visit pacificline.com or scan this code for current pricing and product info